

# TRIANGLE DESIGNS

## SYMMETRICAL AND ASYMMETRICAL ARRANGEMENTS

DESIGN

1

### Background

Today's modern triangle designs are based on the byzantine era of floral designs. These one-sided designs are useful where a design should be up against a wall.

Symmetrical Triangles have formal or mirrored balance. They are utilized in front of podiums or against a wall on top of a table. An exceptional or large symmetrical design could serve as a background at a check-in table for an event or other situation where a centerpiece should be against a wall. Sympathy and pedestal arrangements share similar form to the symmetrical triangle.

An Asymmetrical Triangle is informally balanced arrangement. The short side is full and heavy, but is balanced by the long tail. Both sides hold the same visual weight, but look completely different. These arrangements are typically used to frame. Crescent arrangements are very similar to the asymmetrical triangle.

#### *Symmetrical Triangle Principles and Elements*

*Line:* radiate from a central point

*Form-* triangle

*Proportion:* small flowers at the edges, large to the center; well sized

*Rhythm:* lines radiate from a central point

*Balance:* right and Left sides are mirrored

*Depth:* flowers placed at different levels

*Unity:* flowers achieve form and "go together"

#### *Symmetrical Triangle Materials*

9 Skeletal Flowers (Carnations or Roses Recommended)

3 Stems Mass or Filler Flowers (Alstroemeria, Mums, or Statice Recommended)

½ Bunch Greenery

⅓ Block of Soaked Floral Foam

1 Standard Floral Design Bowl

1 Floral Knife

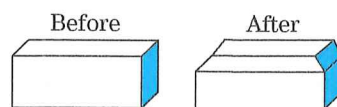
¼" Anchor Tape

## SYMMETRICAL TRIANGLE DESIGN

### Set-Up

Place  $\frac{1}{3}$  of a fully soaked block of floral foam in a standard floral design bowl. Bevel the foam. Hold a floral knife at a slight angle to the foam and slide the knife through the foam to cut off each edge. This increases the surface area of the foam. Use anchor tape to secure the foam to the bowl. There are multiple methods to secure the foam. Follow your instructor's directions for this portion.

### Beveling Foam



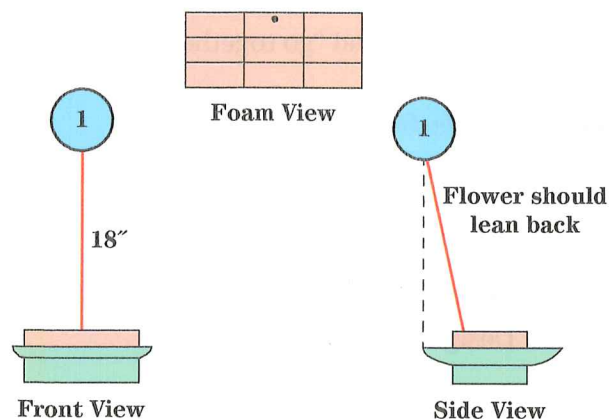
### Anchor Tape Methods



Tape can circle all the way around the bowl and foam or only just under the lip.

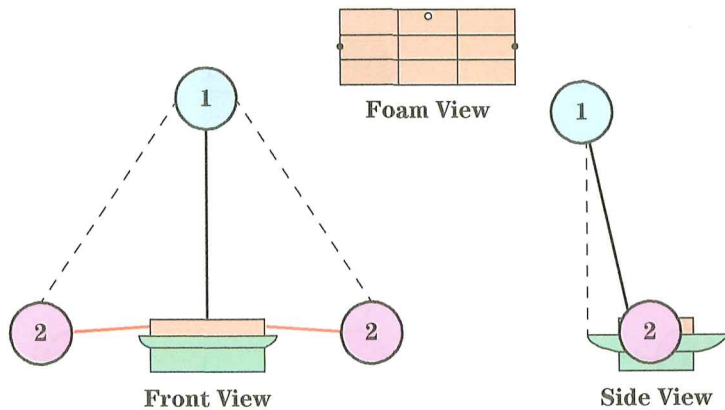
### Step 1: Triangle Top

Use the straightest flower. Cut it to 18 inches tall and insert it at a slight angle in the back center of the foam. **TIP:** *Carnations have swollen nodes, to insert into the foam, you may have to trim the node.*



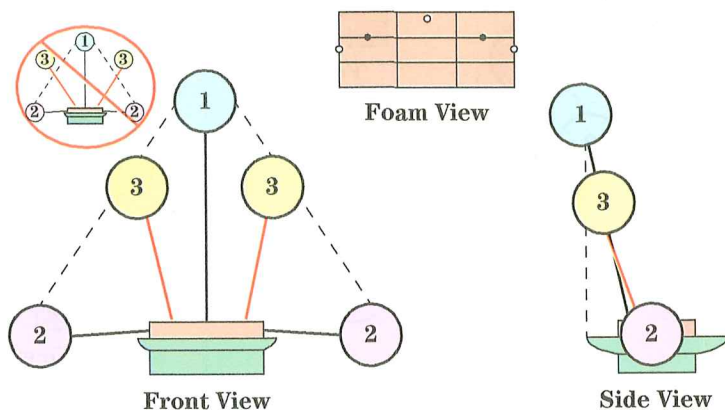
## Step 2: Triangle Corners

Insert at a slightly downward angle in the middle of each side of the foam. This establishes the triangle form and no flowers should exceed these boundaries. **TIP:** Use *slightly bent carnations* here if available.



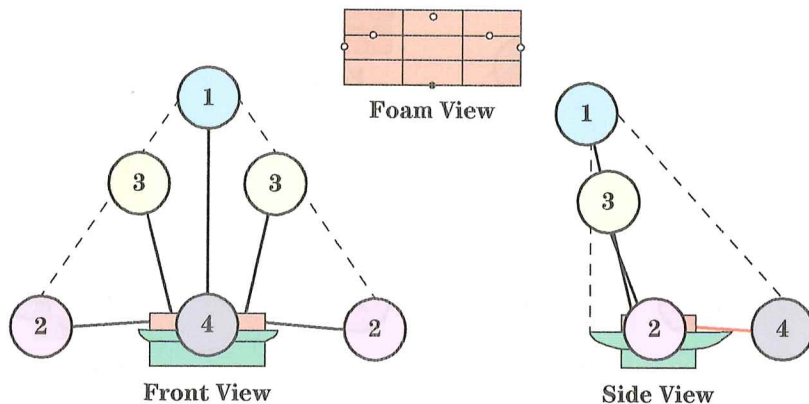
## Step 3: Triangle Sides

Insert on the back  $\frac{1}{3}$  line on either side of #1. The heads of the flower should be in line with the lines made by #1 and #2 on either side. **WARNING:** Do not place these flowers outside the lines of the primary triangle. You will lose your shape.



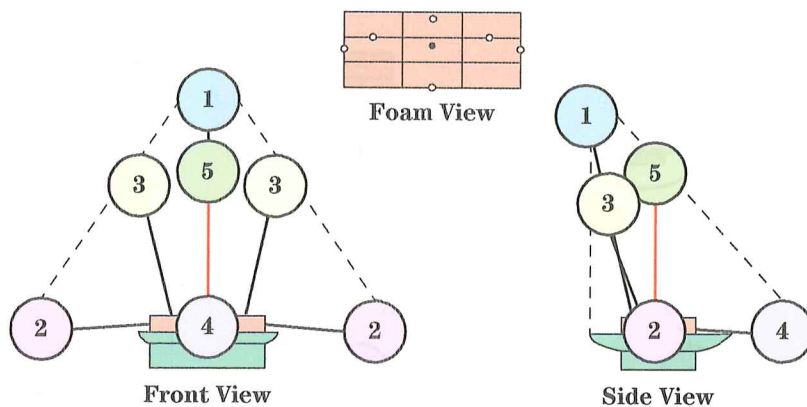
### Step 4: Side Triangle Corner

Insert at a slightly downward angle in the middle of the front side of the foam. From the side, #4 should form a second triangle that no flowers should exceed. **TIP:** *Closed or asymmetrical carnations can be improved by gently rolling the calyx and fluffing the petals.*



### Step 5: Inner Triangle Top

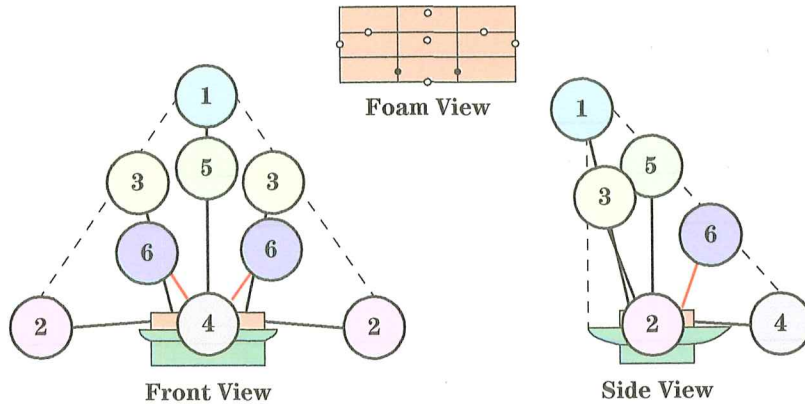
Insert in the middle of the foam. It should be in line with #1 and #4. It establishes the top of a second triangle within the original.





## Step 6: Inner Triangle Corners

Insert on the  $\frac{1}{3}$  lines on the front side of the foam. These should form the bottom corners of the inner triangle and continue the line of #1 and #4.



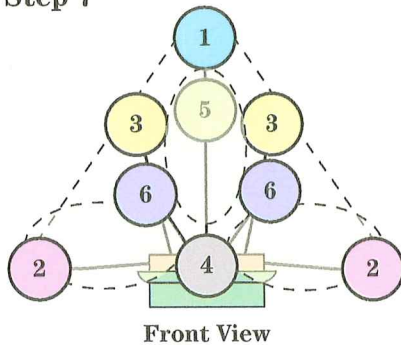
## Steps 7 and 8: Mass/Filler Flowers and Greenery

Use mass and/or filler flowers between the skeletal flowers especially in the areas circled.

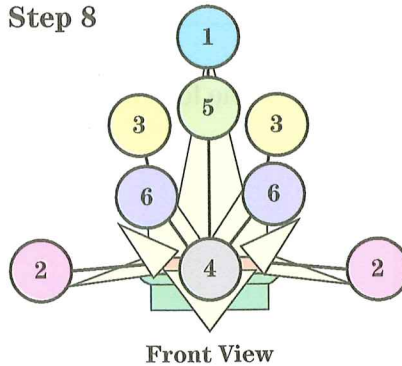
Use greenery to continue filling the arrangement and hiding ALL the mechanics. Cover the edge of the bowl, all the foam, and anchor tape. Make sure to complete the back of the arrangement using a tall piece of greenery behind #1, and smaller pieces to cover the foam and bowl.

**WARNING:** DO NOT OVERPOWER YOUR ARRANGEMENT WITH FILLER AND GREENERY. You will lose your shape. Greenery should cover mechanics and form a background; filler should accentuate the form.

Step 7



Step 8



Name: \_\_\_\_\_ Instructor: \_\_\_\_\_

Date: \_\_\_\_\_ Lab Section: \_\_\_\_\_

## SYMMETRICAL DESIGN REPORT

Introduction

A symmetrical design

is \_\_\_\_\_

\_\_\_\_\_

\_\_\_\_\_

Materials used

\_\_\_\_\_

\_\_\_\_\_

\_\_\_\_\_

\_\_\_\_\_

Principles and Elements used

\_\_\_\_\_

\_\_\_\_\_

\_\_\_\_\_

\_\_\_\_\_

Discussion

\_\_\_\_\_

\_\_\_\_\_

\_\_\_\_\_

\_\_\_\_\_

Please complete the following rubric and attach images of your design for credit.

## Floral Design Grading Rubric

Student: \_\_\_\_\_ Design \_\_\_\_\_

	10	9	8	7	6	5	4	3	2	1	Points
<b>Design</b>	Shows high quality of design. Needs little or no improvement.				Shows some use of design. Needs improvement.				Shows little or no use of design. Needs much improvement.		
<b>Balance</b>	Shows visual and actual balance. Needs little or no improvement.				Shows attempt at balance. Needs some improvement.				Not balanced. Needs much improvement.		
<b>Proportion</b>	Container and flowers are in good proportion. Needs no improvement.				Shows attempt at proportion. Needs some improvement.				Shows lack of proportion. Needs much improvement.		
<b>Harmony</b>	Component parts blend together. Needs little or no improvement.				Component parts blend together somewhat. Needs some improvement.				Component parts do not blend together.		
<b>Mechanics</b>	Excellent no foam showing Water is clear				Needs improvement				Poor... Foam shows Water is dirty		
<b>Rhythm</b>	Shows good use of rhythm. Eye moves smoothly through arrangement. Needs little or no improvement.				Shows some use of rhythm but needs improvement.				Shows little or no use of rhythm. Needs much improvement.		
<b>Repetition</b>	Shows use of repetition to add interest to the arrangement.				Shows use of repetition but needs some improvement.				Incorrect use of repetition. Needs much improvement.		
<b>Unity</b>	Whole composition is a complete unit. Needs little or no improvement.				Shows use of unity but needs improvement to become a complete unit.				Complete lack of unity. Needs much improvement.		
<b>Color</b>	Combination of color is pleasing and appropriate for occasion.				Combination of color needs improvement.				Poor use of color or is not suitable for occasion.		
<b>Concept</b>	Concept is appropriate for the business				Concept is somewhat appropriate for the business				Concept is not appropriate/there is no concept		
									<b>Total Points</b>		

## Additional Notes:

Judge \_\_\_\_\_ A \_\_\_\_\_ B \_\_\_\_\_ C \_\_\_\_\_

## ASYMMETRICAL TRIANGLE DESIGN

### Background

Today's modern triangle designs are based on the byzantine era of floral designs. These one-sided designs are useful where a design should be up against a wall.

Symmetrical Triangles have formal or mirrored balance. They are utilized in front of podiums or against a wall on top of a table. An exceptional or large symmetrical design could serve as a background at a check-in table for an event or other situation where a centerpiece should be against a wall. Sympathy and pedestal arrangements share similar form to the symmetrical triangle.

An Asymmetrical Triangle is informally balanced arrangement. The short side is full and heavy, but is balanced by the long tail. Both sides hold the same visual weight, but look completely different. These arrangements are typically used to frame. Crescent arrangements are very similar to the asymmetrical triangle.

#### *Asymmetrical Triangle Principles and Elements*

*Line:* radiate from a central point

*Form:* triangle

*Proportion:* small flowers at the edges, large to the center; well sized

*Rhythm:* lines radiate from a central point

*Balance:* right and left sides have equal weight, but look different

*Depth:* flowers placed at different levels

*Unity:* flowers achieve form and "go together"

#### *Asymmetrical Triangle Materials*

9 Skeletal Flowers (Carnations or Roses Recommended)

3 Stems Mass or Filler Flowers (Alstroemeria or Statice Recommended)

½ Bunch Leatherleaf Fern

⅓ Block of Soaked Floral Foam

1 Standard Floral Design Bowl

1 Floral Knife

¼" Anchor Tape

**NOTE:** The Asymmetrical Triangle can have the long side on the right or left side. This manual gives the directions with the long side on the right. To have the long side on the left, flip the directions.

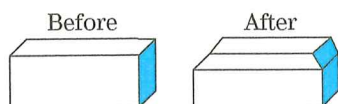


## ASYMMETRICAL TRIANGLE DESIGN

### Set-Up

Place  $\frac{1}{3}$  of a fully soaked block of floral foam in a standard floral design bowl. Bevel the foam. Hold a floral knife at a slight angle to the foam and slide the knife through the foam to cut off each edge. This increases the surface area of the foam. Use anchor tape to secure the foam to the bowl. There are multiple methods to secure the foam. Follow your instructor's directions for this portion.

### Beveling Foam



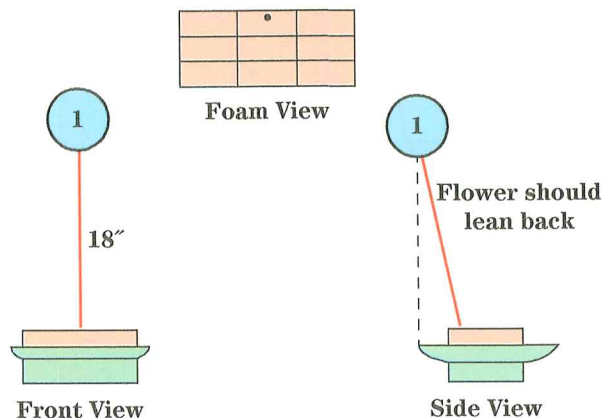
### Anchor Tape Methods



Tape can circle all the way around the bowl and foam or only just under the lip.

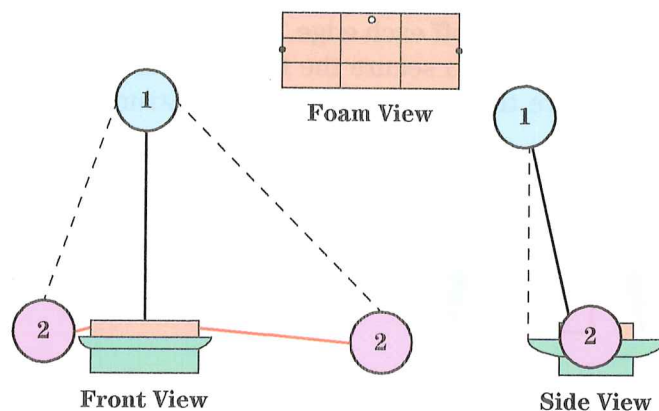
### Step 1: Triangle Top

Use the straightest flower. Cut it to 18 inches tall and insert it at a slight angle in the back center of the foam. **TIP:** *Carnations have swollen nodes, to insert into the foam, you may have to trim the node.*



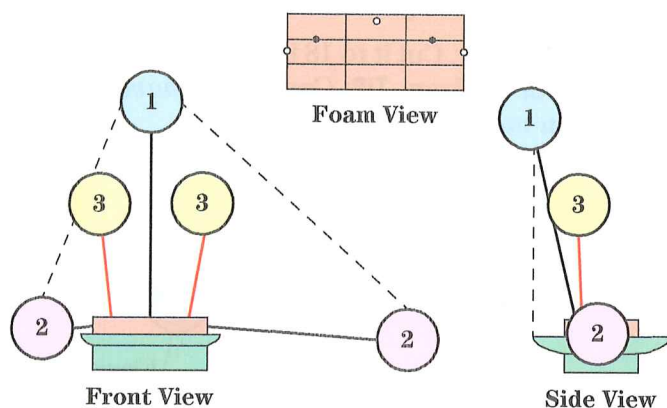
## Step 2: Triangle Corners

Insert at a slightly downward angle in the middle of each side of the foam. This establishes the triangle form and no flowers should exceed these boundaries. The left side should be short and the right side long. **TIP:** Use *slightly bent carnations* here if available.



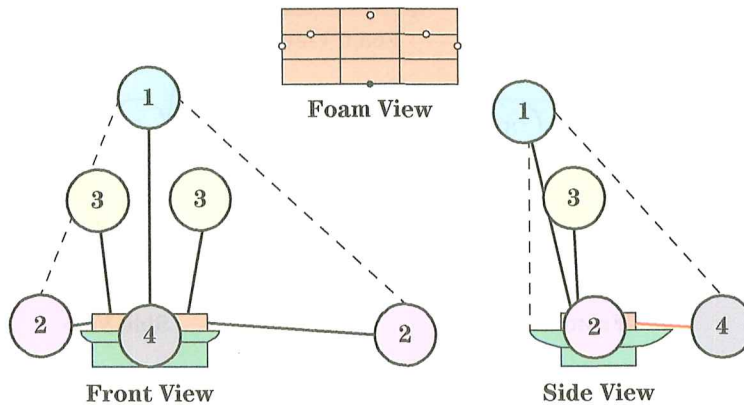
## Step 3: Triangle Sides

Insert on the back  $\frac{1}{3}$  line on either side of #1. They should come slightly forward from #1.



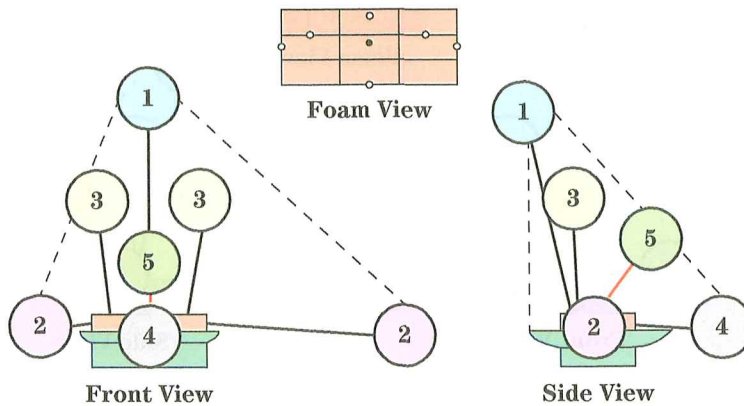
## Step 4: Side Triangle Corner

Insert at a slightly downward angle in the middle of the front side of the foam. From the side, #4 should form a second triangle that no flowers should exceed. **TIP:** *Closed or asymmetrical carnations can be improved by gently rolling the calyx and fluffing the petals.*



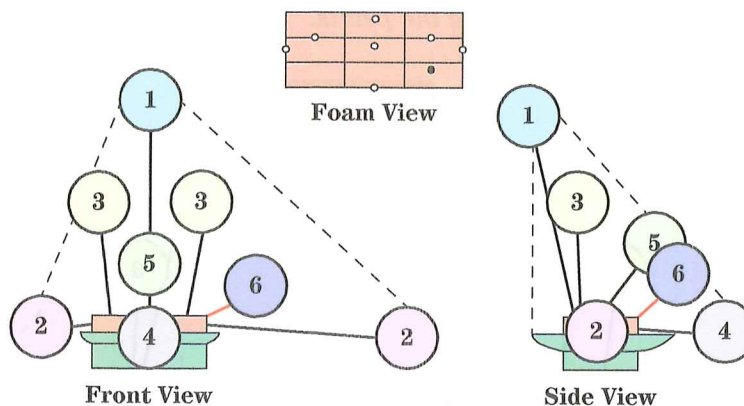
## Step 5: The Center

Insert in the middle of the foam. It should be in line with #1 and #4. It should fit in the middle of the arrangement and lean toward the front.



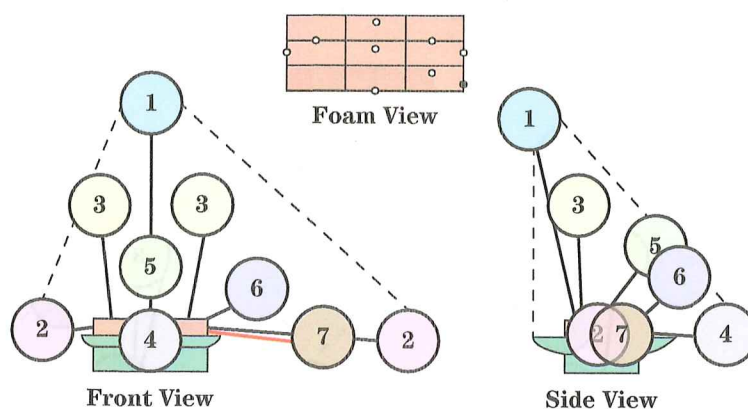
## Step 6: Pull Toward the Long Side

Insert on the front  $\frac{1}{3}$  line on the right side. It should angle toward the front and the long side of the arrangement.



## Step 7: Tie in the Long Side

Insert in the middle of the front  $\frac{1}{3}$  on the right side of the foam. It should line up with #2 and end  $\frac{2}{3}$  down the stem. It should have a slight downward angle.



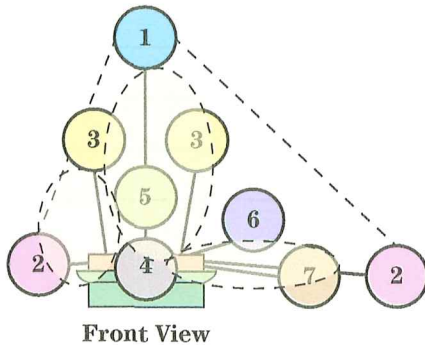
## Steps 8 and 9: Mass/Filler Flowers and Greenery

Use mass and/or filler flowers between the skeletal flowers especially in the areas circled.

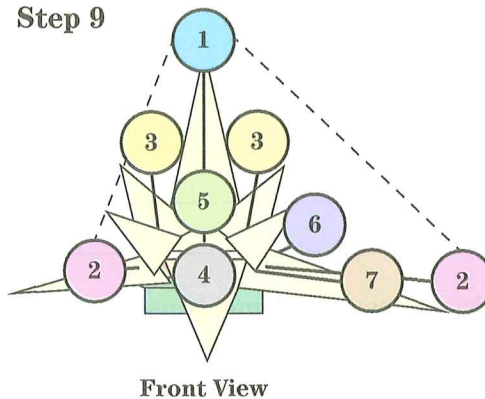
Use greenery to continue filling the arrangement and hiding ALL the mechanics. Cover the edge of the bowl, all the foam, and anchor tape. Make sure to complete the back of the arrangement using a tall piece of greenery behind #1, and smaller pieces to cover the foam and bowl.

**WARNING: DO NOT OVERPOWER YOUR ARRANGEMENT WITH FILLER AND GREENERY.** You will lose your shape. Greenery should cover mechanics and form a background; filler should accentuate the form.

Step 8



Step 9





**Name:** \_\_\_\_\_ **Instructor:** \_\_\_\_\_  
**Date:** \_\_\_\_\_ **Lab Section:** \_\_\_\_\_

## ASYMMETRICAL DESIGN REPORT

Introduction

An asymmetrical design

is \_\_\_\_\_  
\_\_\_\_\_  
\_\_\_\_\_

Materials used

\_\_\_\_\_  
\_\_\_\_\_  
\_\_\_\_\_  
\_\_\_\_\_

Principles and Elements used

\_\_\_\_\_  
\_\_\_\_\_  
\_\_\_\_\_  
\_\_\_\_\_

Discussion

\_\_\_\_\_  
\_\_\_\_\_  
\_\_\_\_\_  
\_\_\_\_\_  
\_\_\_\_\_

Please complete the following rubric and attach images of your design for credit

## Floral Design Grading Rubric

Student: \_\_\_\_\_ Design \_\_\_\_\_

	10	9	8	7	6	5	4	3	2	1	Points
Design	Shows high quality of design. Needs little or no improvement.				Shows some use of design. Needs improvement.			Shows little or no use of design. Needs much improvement.			
Balance	Shows visual and actual balance. Needs little or no improvement.				Shows attempt at balance. Needs some improvement.			Not balanced. Needs much improvement.			
Proportion	Container and flowers are in good proportion. Needs no improvement.				Shows attempt at proportion. Needs some improvement.			Shows lack of proportion. Needs much improvement.			
Harmony	Component parts blend together. Needs little or no improvement.				Component parts blend together somewhat. Needs some improvement.			Component parts do not blend together.			
Machanics	Excellent no foam showing Water is clear				Needs improvement			Poor.... Foam shows Water is dirty			
Rhythm	Shows good use of rhythm. Eye moves smoothly through arrangement. Needs little or no improvement.				Shows some use of rhythm but needs improvement.			Shows little or no use of rhythm. Needs much improvement.			
Repetition	Shows use of repetition to add interest to the arrangement.				Shows use of repetition but needs some improvement.			Incorrect use of repetition. Needs much improvement.			
Unity	Whole composition is a complete unit. Needs little or no improvement.				Shows use of unity but needs improvement to become a complete unit.			Complete lack of unity. Needs much improvement.			
Color	Combination of color is pleasing and appropriate for occasion.				Combination of color needs improvement.			Poor use of color or is not suitable for occasion.			
Concept	Concept is appropriate for the business				Concept is somewhat appropriate for the business			Concept is not appropriate/there is no concept			
								Total Points			

## Additional Notes:

Judge \_\_\_\_\_ A \_\_\_\_\_ B \_\_\_\_\_ C \_\_\_\_\_

